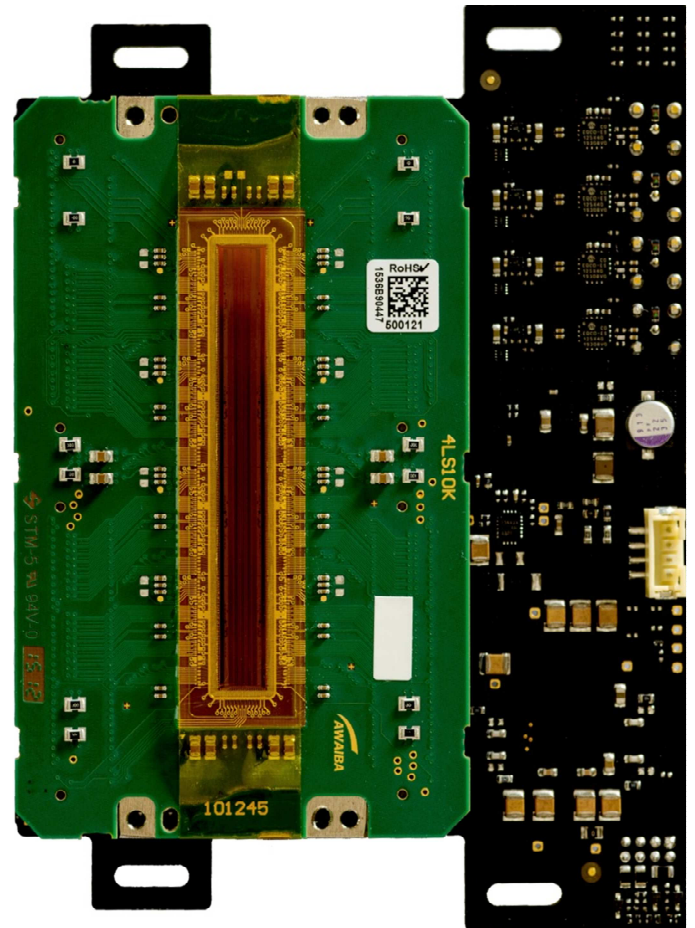


## LC4LS camera family

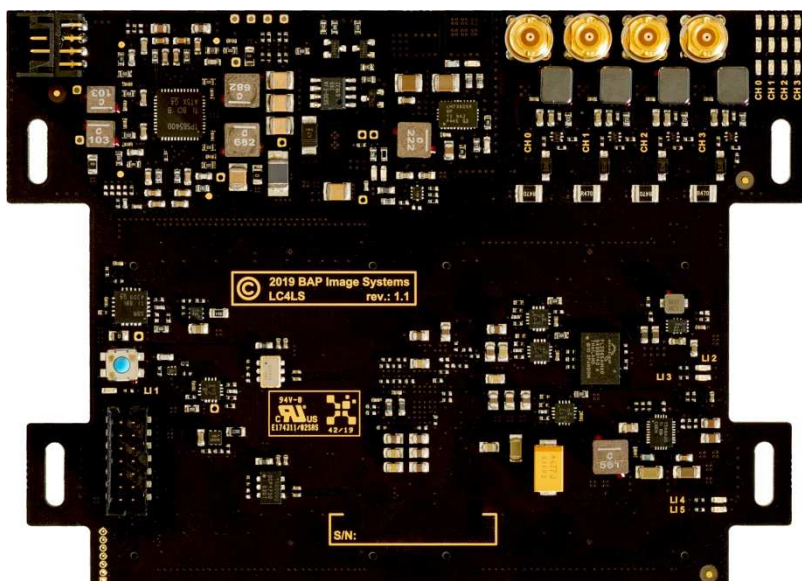
### LC4LS\_10K - Color Line Camera 155k Scanlines/s

#### Technical description:

- Resolution: 10 176 pixel x 4 lines, R,G,B + IR (no filter) photosensitive lines
- Bit depth:
  - 8-bit RGB color
  - 10-bit RGB color
  - 11.5 in 12-bit RGB color
- Capture method: 4 x 10 176 true quad-linear color without Bayer mosaic
- Pixel size: 5.6 x 5.6  $\mu\text{m}$  square
- Speed: up to 155 kHz line rate at 3 x 8 bit per pixel output
- Output interface: 4 lane CoaXPRESS 12.5 Gbps (4 x CXP-12)
- Power supply: power over CoaXPRESS



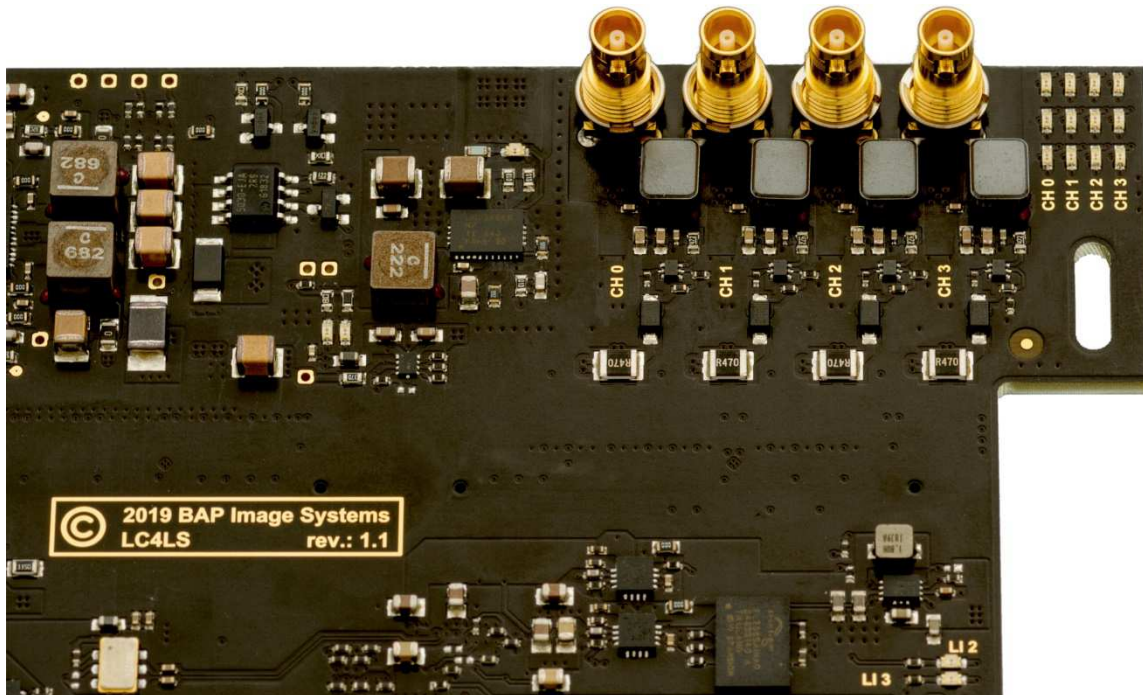
#### Advantages:



- Outstanding performance: up to 155 kHz line rate without compromising quality.
- Exceptional image quality due to complete RGB+IR capture without Bayer mosaic with 4 x 12 bit per pixel processing and various output bit depths.
- Horizontal and vertical image re-scaling (anti-aliased) & ROI.
- Ability of camera non-volatile self-calibration (flat field + shading compensation + global gain).
- Precise, curve-based: contrast, brightness, gamma, shadow, highlight and linearization enhancement through high resolution LUTs.
- Built-in test patterns for debugging and verification.
- Sensor power off capability.

## LC4LS camera family

### LC4LS\_10K - Color Line Camera 155k Scanlines/s



#### CoaXPress interface in LC4LS:

- Video transmission, configuration, and power connection using certified 75 Ohm coaxial cables.
- CoaXPress vision standard version 2.0 compliant.
- CoaXPress 12.5 Gbps over four links. Also supports 3.125 Gbps, 6.25 Gbps modes for lower performance grabbers.
- Supports PoCXP (Power over CoaXPress) to be supplied using data cable only (compatible grabber required).
- Compatible with IE5G\_SS + DB5G\_CXP4 daughter board set with 4 x 6.25 Gbps interface speed and PoCXP supply mode.
- Maximum captured object speed in 4 x 8-bit per pixel mode:

@ 200 DPI:	19.6 m/s	(775 in/s).
@ 300 DPI:	13.1 m/s	(516 in/s).
@ 600 DPI:	6.5 m/s	(258 in/s).

**BAP Image Systems (BAPis)** is a dependable and reliable imaging products and solution provider with highly proven industry experience. BAPis develops and manufactures cameras based not only on high speed CCD and CMOS line sensors, but also on area CMOS/CCD sensors. BAPis cameras are used in the machine vision industry as well as in the film industry. Additionally, BAPis develops and produces image grabbers and processing boards based on DSP and FPGA technologies using its own algorithms. Image processing boards are matched with camera performance and, when combined, are able to reach the highest possible throughput.

**BAP Image Systems GmbH**  
Etzstr. 37  
84030 Ergolding, Germany  
Tel: +49-871-43059922  
Fax: +49-871-43059929

**BAP Image Systems, LLC**  
1120 South Freeway, Ste 214  
Fort Worth, TX 76104, USA  
Tel: +1-817-878-2773  
Fax: +1-817-878-2739

info@bapimaging.com  
www.bapimaging.com